

# California Rice Commission

WDR, Program Highlights and Vote



## Overview of Water Quality Programs

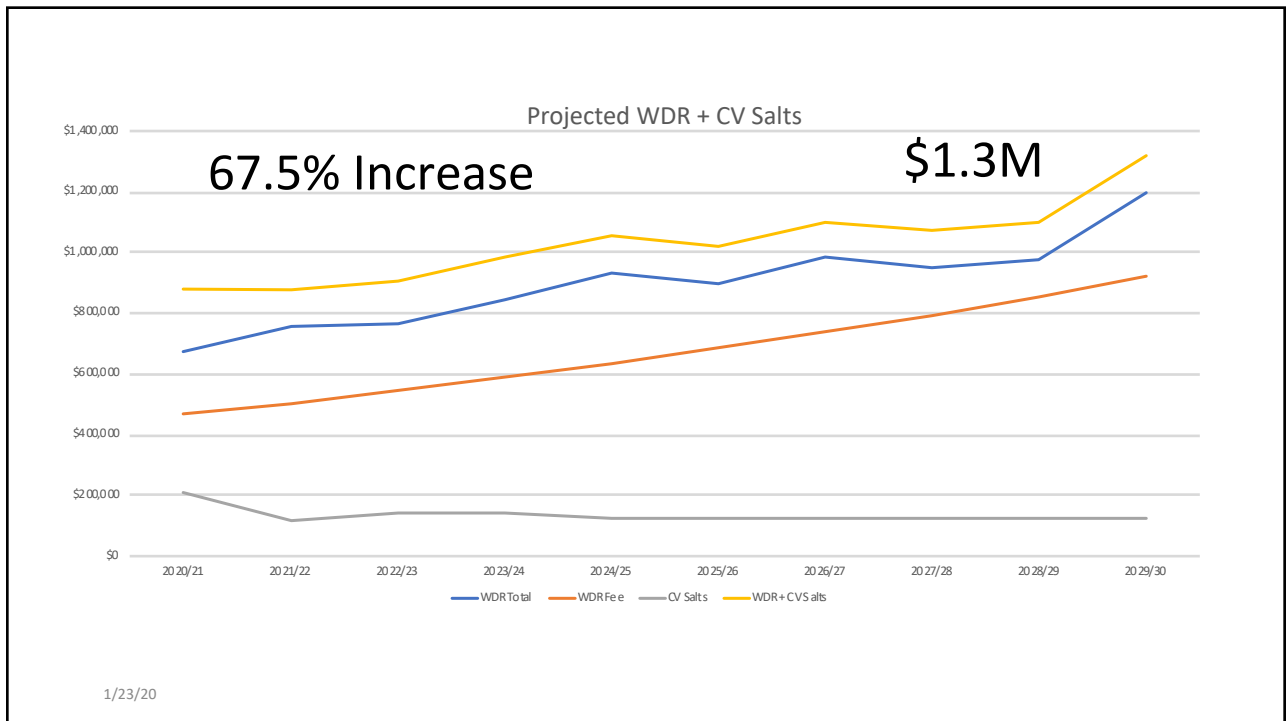
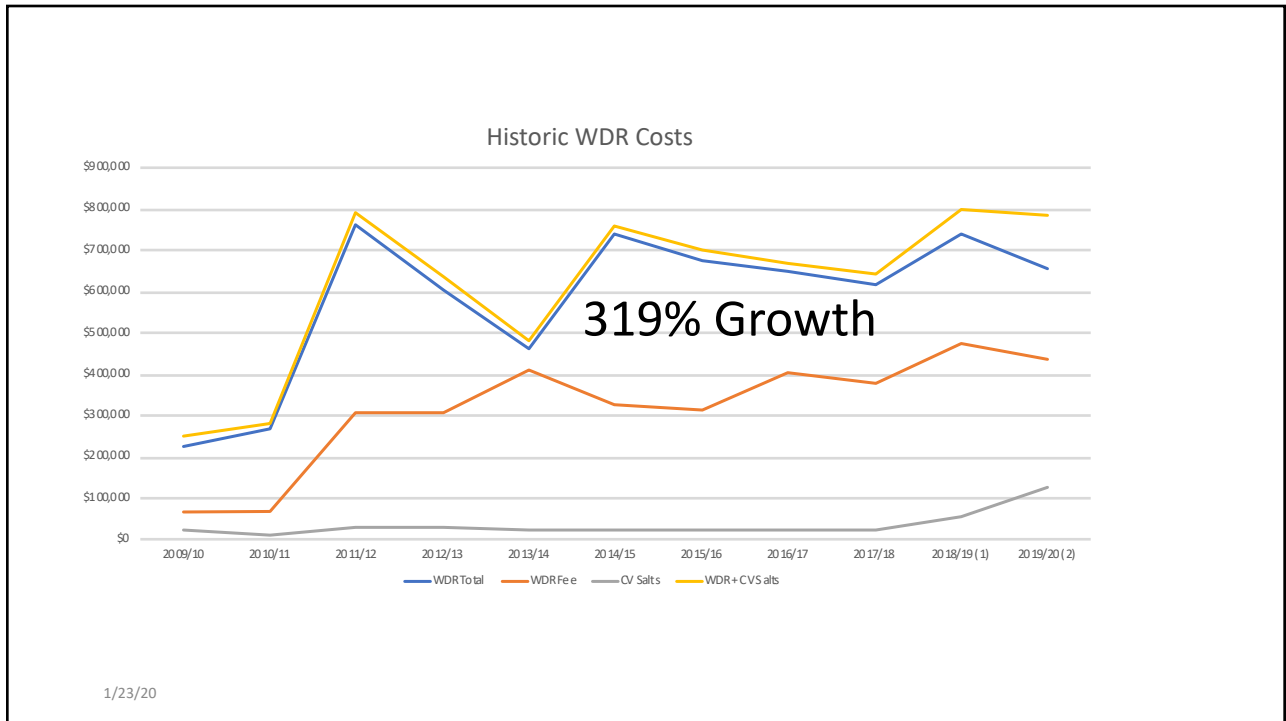


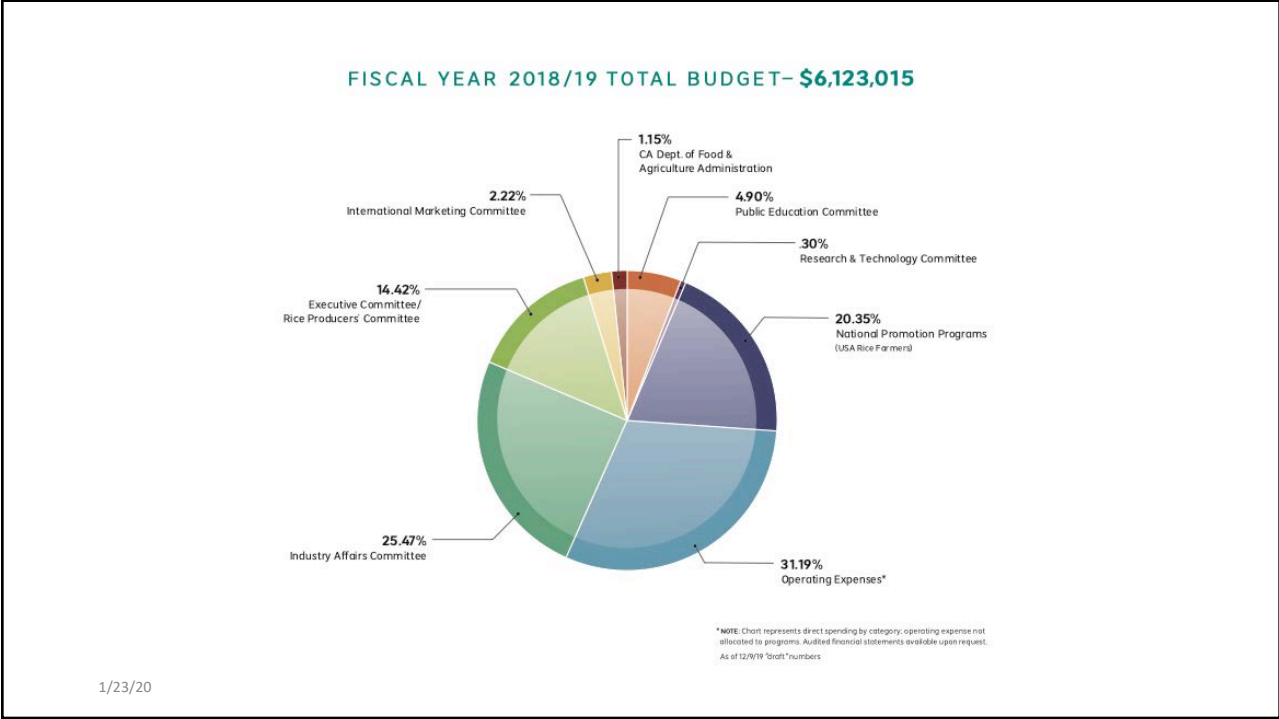
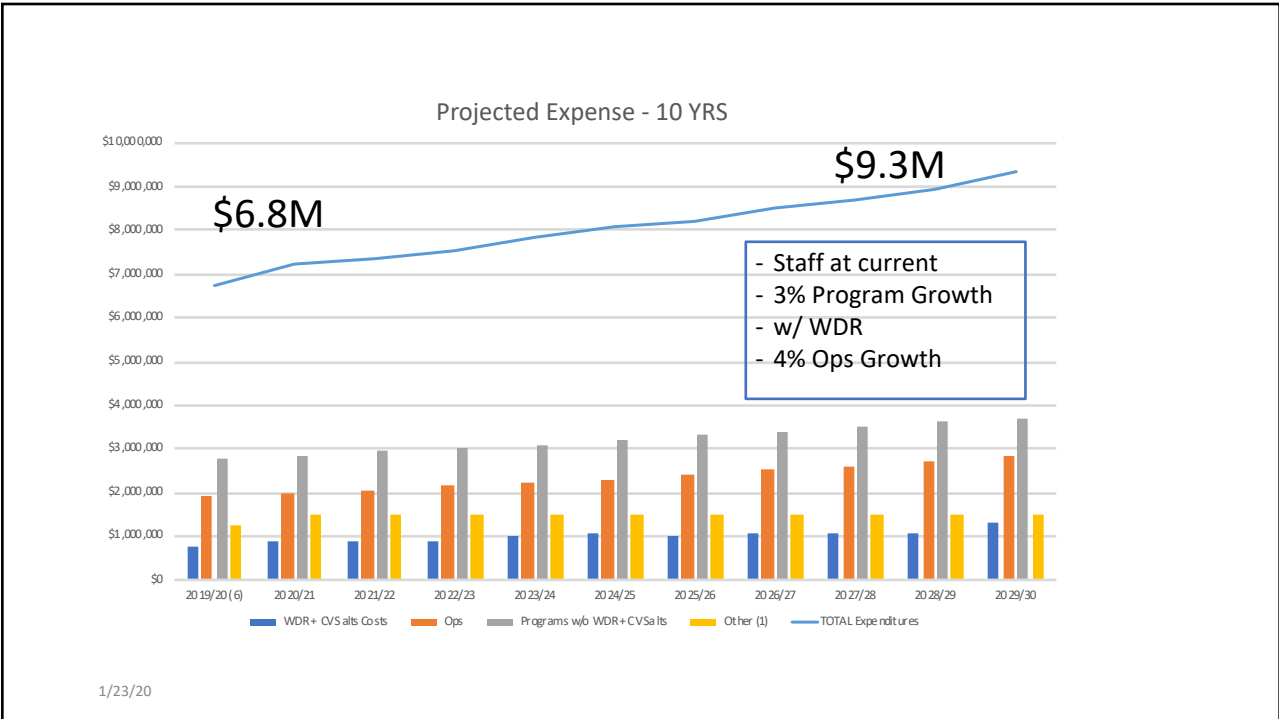
1/23/20

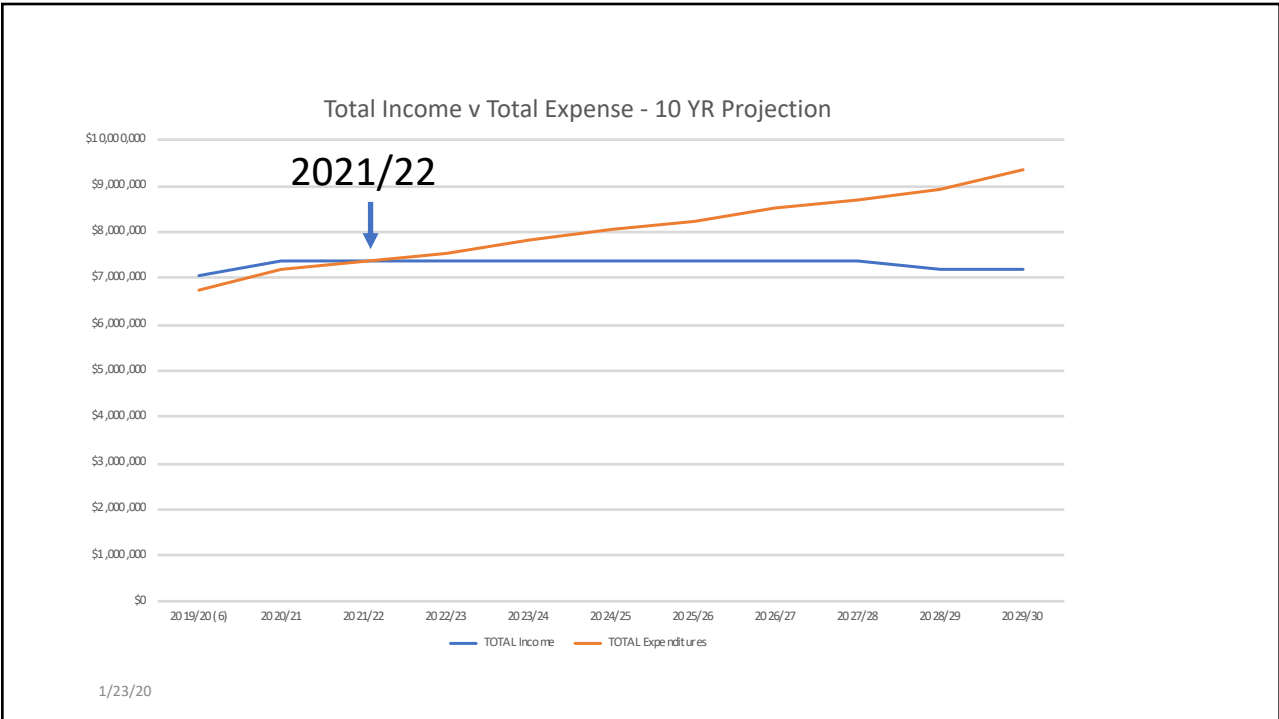
### Rice Pesticide Program (1990)

### Waste Discharge Requirement - WDR

- 2004 - Surface water
- 2014 - Added groundwater
- 2019 - Adds nitrate, drinking water and salinity







## Key Benefits of Rice WDR

### **Rice Specific WDR**

- Only commodity specific WDR
- No APN
- Significantly lower monitoring and reporting requirements
- Lower SWRCB fee
  - \$.87 v \$1.08 per acre

### **Total Cost**

- \$1.60 per acre (plus staff)
- \$4.00 - \$7.00 acre



## Major Amendment



1/23/20

Ballots out June – 60 days

Reminder in early July

Asked to vote to increase the assessment cap from 15¢ to 20¢ per hundredweight

- annual budget development

## Communications – Last 10 years

1,224 Media inquiries

42 million hits Calrice.org

20 million impressions A&G

5.2 million reached on Twitter



1/23/20



15 million reached on Facebook

850K YouTube views

11K per week on Instagram

1/23/20

## Crop Protection – 10 Year Highlight



Butte

Oxyflourfen

Thiobencarb

3 new AI's in process

1/23/20

Coragen (Prevathon)  
- 2019 IR-4 priority  
Intrepid



1/23/20

## A Decade of Conservation

10 unique programs  
\$20 million paid to growers  
511,400 AC  
Partnerships worth \$30M  
Another \$13.4M in the next 5  
years  
1 million acres by 2025



1/23/20



### California Rice Salmon Project

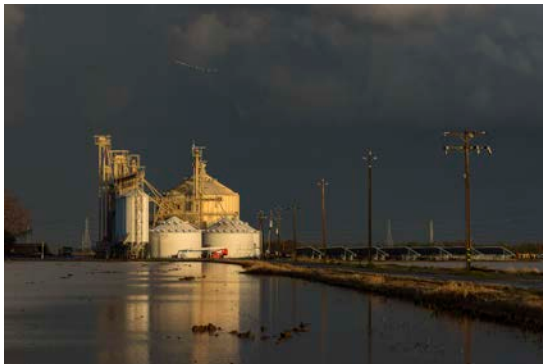
Unique 2 year project

\$1.4M

Backbone of NRCS program - what rice can do for salmon

1/23/20

## Trade – Key Highlights



China Phytosanitary

Japan bi-laterals

Korea CSQ

Trademarks

Calrose promotions in Japan, Korea, Turkey

1/23/20



## Farm Policy – Our last farm bill

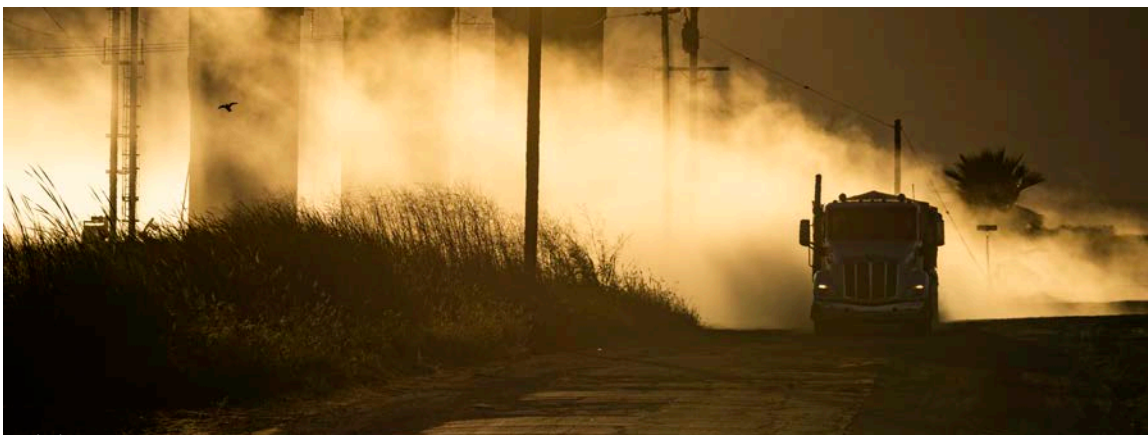
### 2018 Farm Bill

- \$7.00 loan
- \$17.36 Temperate Japonica Reference Price
- Improvements in definition of family to include first cousins, nieces, nephews
- 10 year EQIP Contracts



1/23/20

## Thank you & Questions



1/23/20